



REALTIME AND CASEVIEW INSTRUCTIONS

CLICK ON A LINK BELOW

REALTIME (SCREEN-SHARING) CONNECTIONS

CASEVIEW INSTRUCTIONS FOR CASE CATALYST

CASEVIEW INSTRUCTIONS FOR ECLIPSE

CASEVIEW INSTRUCTIONS FOR STENOCAT

REALTIME (SCREEN-SHARING) CONNECTIONS

Please be aware that because of new evidence presentation hardware going into many of the courtrooms, they will be changing over to an HDMI realtime (screen-sharing) hookup instead of VGA (CaseView hookup will remain the same).

If you plan to hook up to realtime or the “screen-sharing” option, you’ll have to purchase an additional adapter for your laptop depending on whether your laptop has an HDMI input or not.

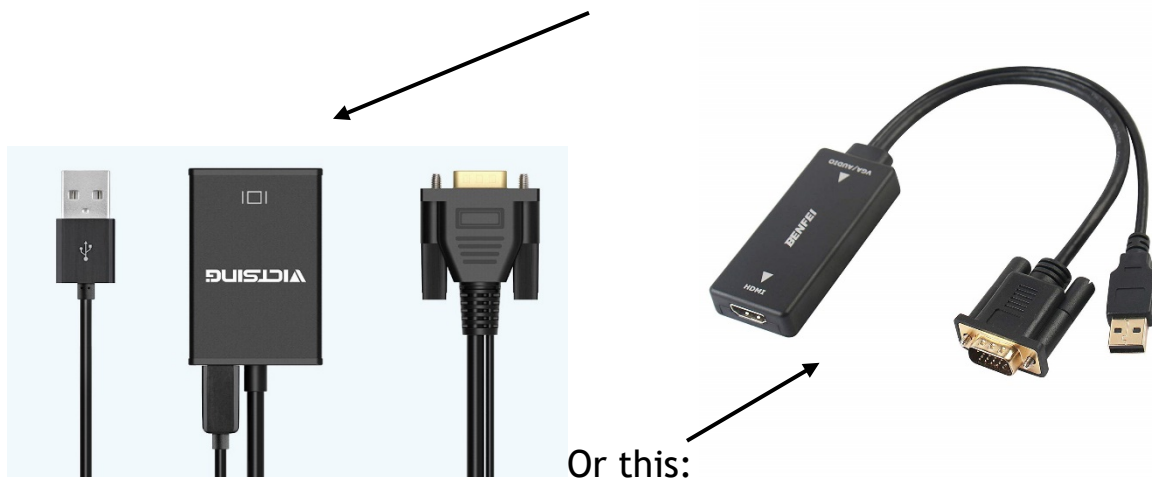
If you have an HDMI input on your laptop, you’re all set. You won’t need an adapter.



If you have no HDMI, but only a VGA input



you can purchase an adapter similar to this:



Or this:

VGA TO HDMI ADAPTER

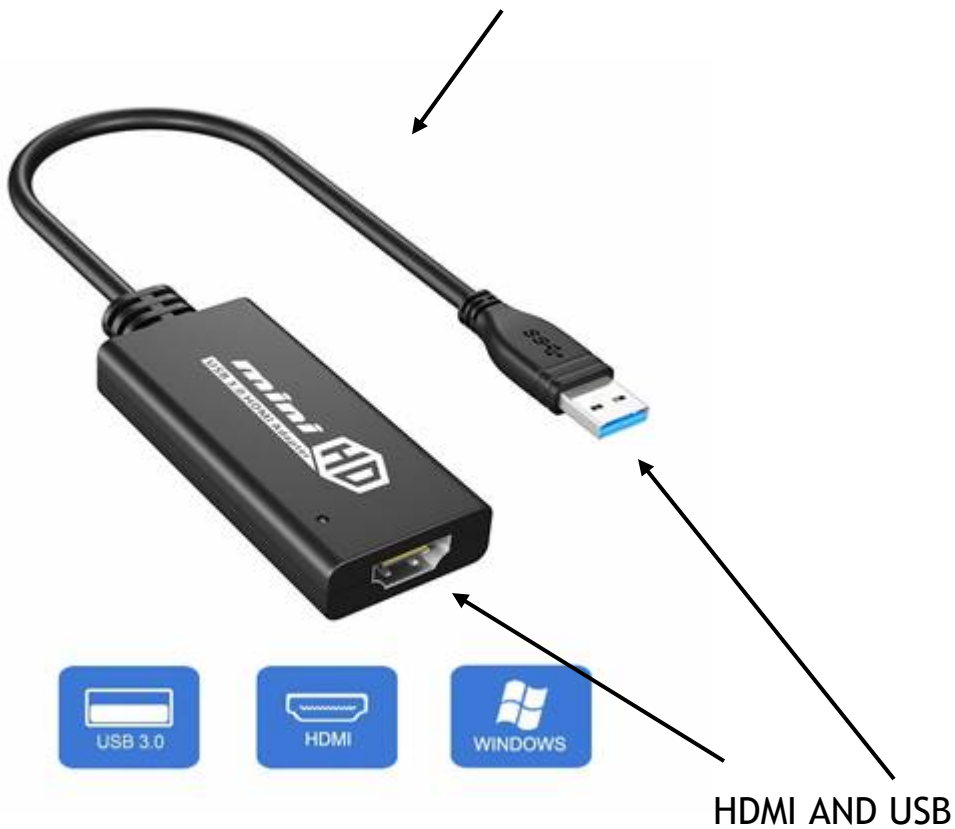
The USB attachment *must be included* to “power” the adapter. (only for VGA to HDMI)

PLEASE NOTE: It must indicate “**VGA TO HDMI**” adapter, not “HDMI TO VGA,” which is different.

If you have no HDMI, no VGA, but only USB inputs



you can buy an adapter similar to this:



It must indicate “**USB to HDMI**” adapter, not “HDMI to USB,” which is different.

Pictured are only suggested brands. They’re all available on Amazon, FYI.

CASEVIEW INSTRUCTIONS FOR CASE CATALYST

The initial steps of setting up your equipment to write to CaseView should be done at home on your own time, not when you get to court.

You must have a USB-to-serial adapter to output to CaseView (FIGURE 1).

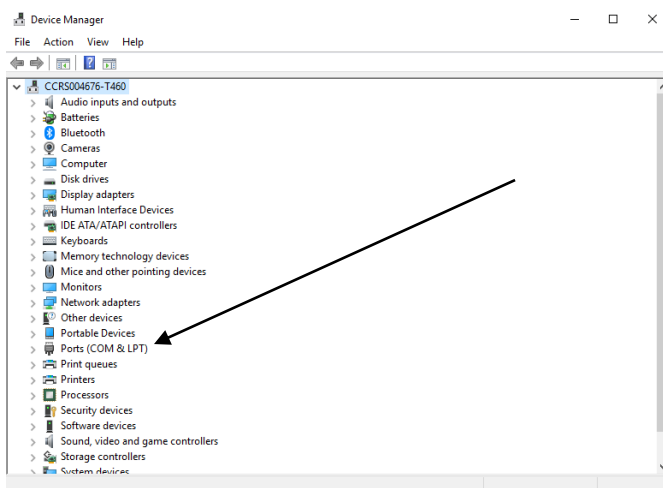
FIGURE 1:



The adapter *MUST HAVE* a driver installed to work with your computer. You can find the particular driver your adapter needs online. If you're not sure how to do this, find someone who can help you.

After installing your driver, you should plug the adapter into an open USB port which should be the same USB port you plug your adapter in each time you use it.

To find out which COM port your adapter is in, first open Device Manager in Windows. Then plug your adapter into the same USB port you intend to use each time. The window should "flash" while it recognizes your adapter. Then click on "Ports (COM & LPT)."

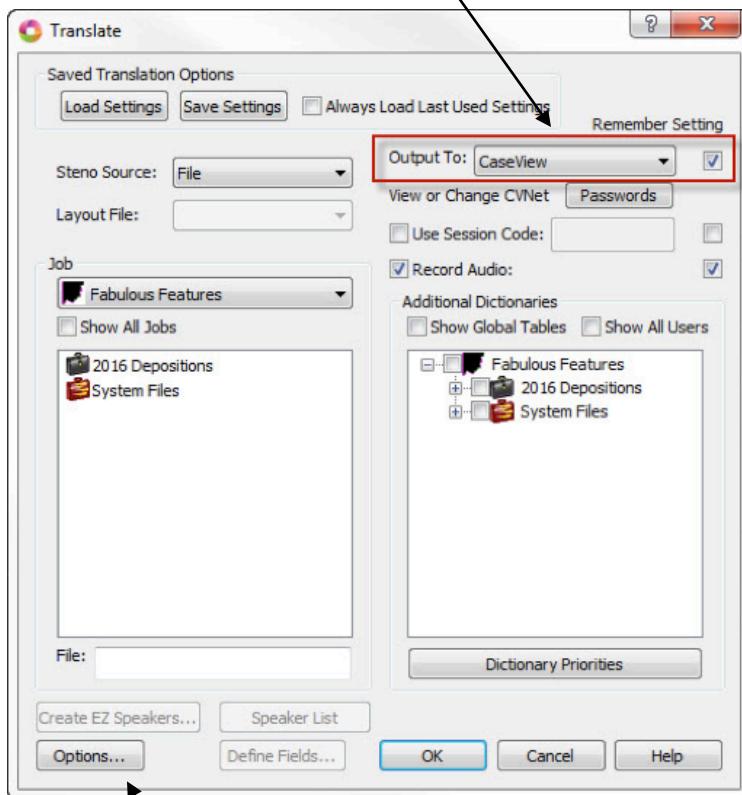


Once you click on "Ports," you should most likely see your machine, including the COM number, and you'll see your USB-to-serial adapter along with its COM number.

Write down the COM number assigned to your USB-to-serial adapter.

Now begin to open a realtime file on your laptop within your Case Catalyst software. In the initial "Translate" window (FIGURE 2), make sure "Output To" shows "CaseView." Check the "Remember Setting" box.

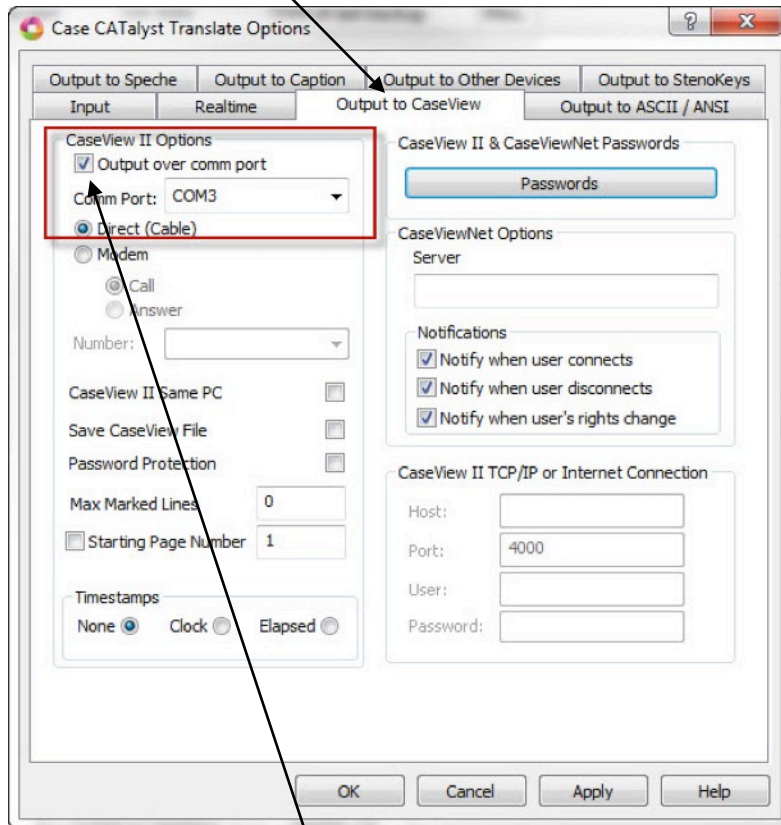
FIGURE 2:



Now click on "Options" in the bottom left.

In your Case Catalyst "Translate Options" window (FIGURE 3), click on the "Output to CaseView" tab.

FIGURE 3:



Check the "Output over comm port" box.

Set your "Comm Port" according to where your USB-to-serial adapter was set. (Should be a different COM port than where your machine was within Device Manager.)

Then make sure "Direct (Cable)" is clicked.

Push "OK."

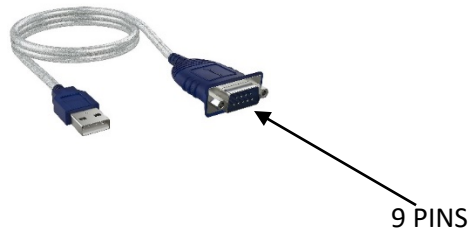
Your software should now be set up to send out to the judge's computer. Go ahead and open up your realtime file and make sure your writing shows up on your own screen.

CASEVIEW INSTRUCTIONS FOR ECLIPSE

The initial steps of setting up your equipment to write to CaseView should be done at home on your own time, not when you get to court.

You must have a USB-to-serial adapter to output to CaseView (FIGURE 1).

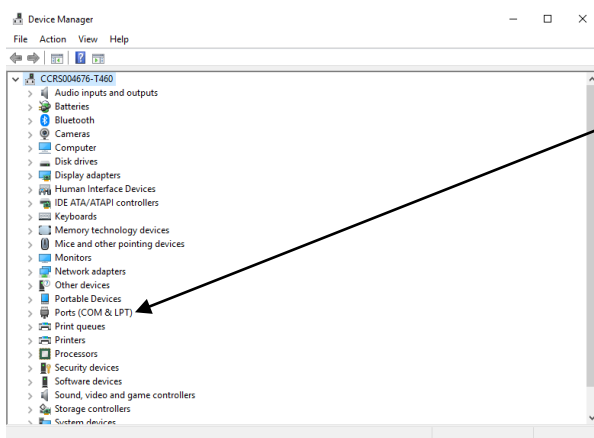
FIGURE 1:



You *MUST INSTALL* a driver onto your laptop for the adapter to function. You can find the particular driver your adapter needs online. If you're not sure how to do this, find someone who can help you.

After installing your driver, you should plug the adapter into an open USB port which should be the same USB port you will plug your adapter in each time you use it.

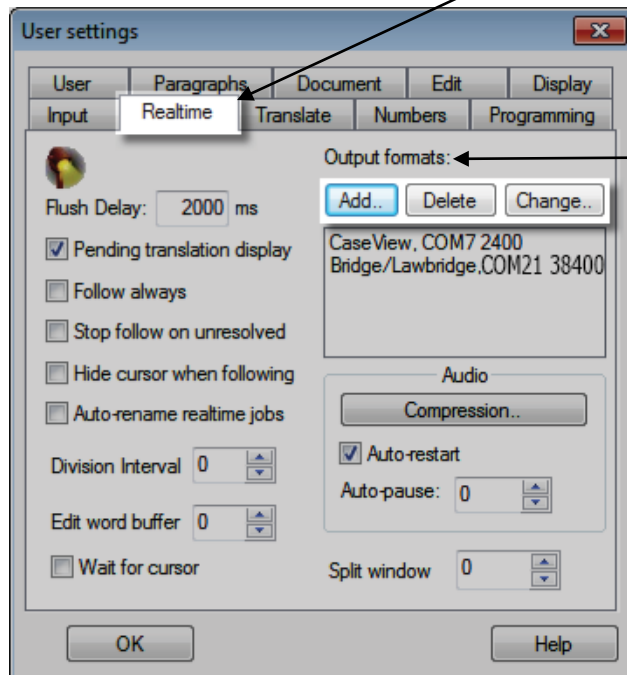
To find out which COM port number your adapter is assigned, first open Device Manager in Windows. Then plug your adapter into the same USB port you intend to use each time. The window should "flash" while it recognizes your adapter. Then click on "Ports (COM & LPT)."



Once you click on "Ports (COM & LPT)" you should see your USB-to-serial adapter along with its assigned COM number. Write down the COM number assigned to your USB-to-serial adapter.

Now open your "User Settings" window (FIGURE 2) and click on the "Realtime" tab.

FIGURE 2:



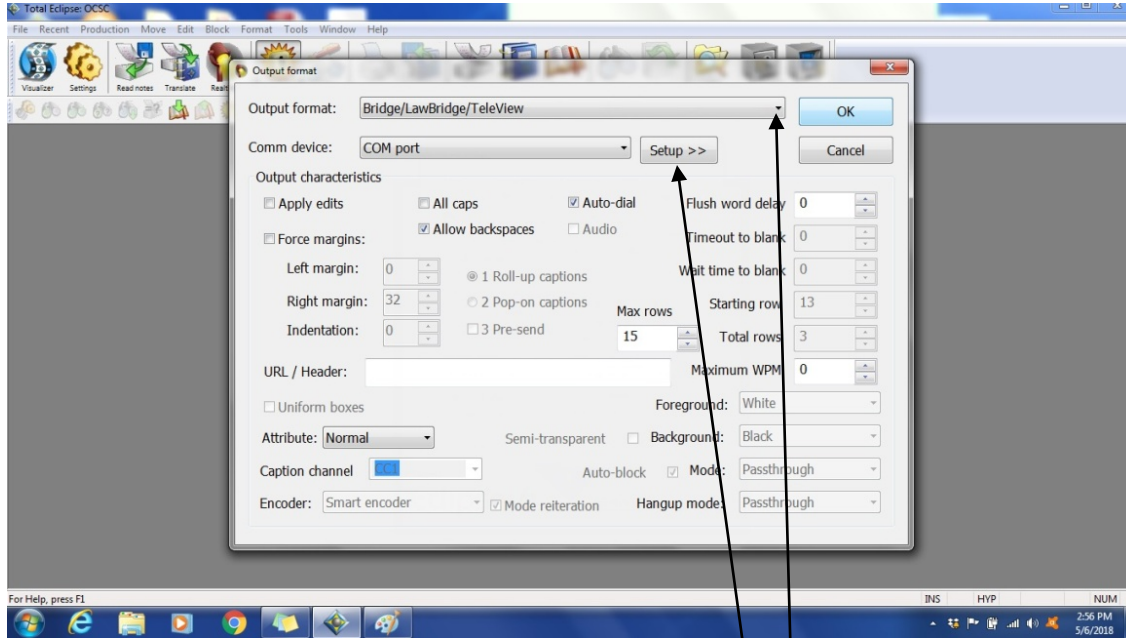
Under "Output formats," if you see "Bridge/Lawbridge" already there, make sure the correct COM number is listed which matches your USB-to-serial adapter COM number and note the Baud rate which is there.

If you need to change the COM number or the Baud rate, click "Change."

If the field is blank below "Output formats," click on "Add."

If you clicked on "Add" or "Change," the following window comes up called "Output format." (FIGURE 3):

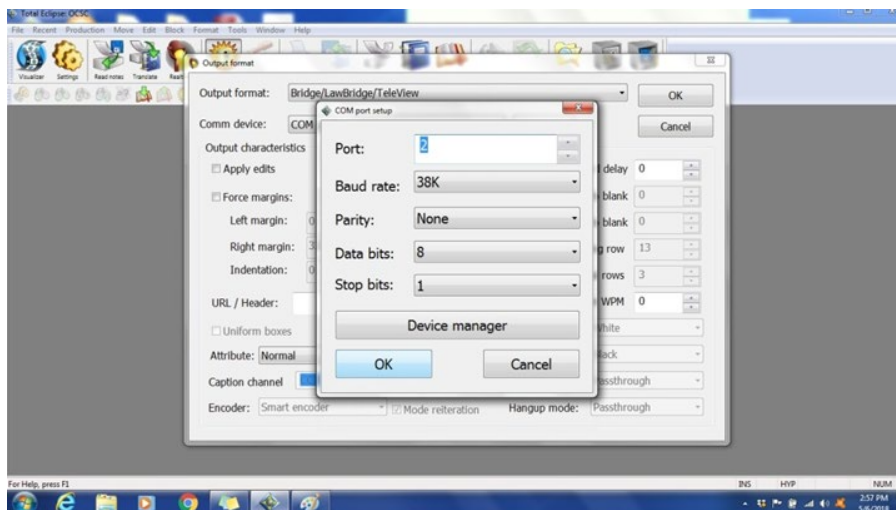
FIGURE 3:



You can change the output format by clicking on the "Output format" down arrow and choosing "Bridge/Lawbridge/Televiow."

Change the COM number and Baud rate by clicking on "Setup." The COM port setup window will open (FIGURE 4). Set the Port number to match your USB-to-serial adapter COM number and set the Baud rate to 2400. Then push "OK" on each window to close.

FIGURE 4:



Go ahead and open your realtime file.

Turning to the judge's computer, once a CaseView file is opened and you're connected to the judge's computer, it should begin displaying your writing.

CASEVIEW INSTRUCTIONS FOR STENOCAT

The initial steps of setting up your USB to serial adapter (installing driver) to write to CaseView should be done at home on your own time, not when you get to court.

You must have a USB-to-serial adapter (FIGURE 1) to output to CaseViewNet. The adapter needs a driver installed to work with your computer.

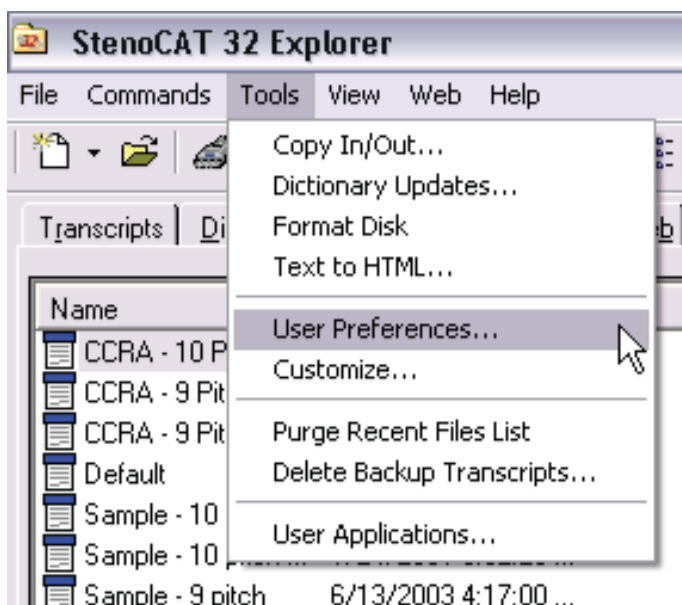
Plug it into one of your open USB ports, and find out to which COM port the adapter is set.

Your baud rate should be set at 2400.

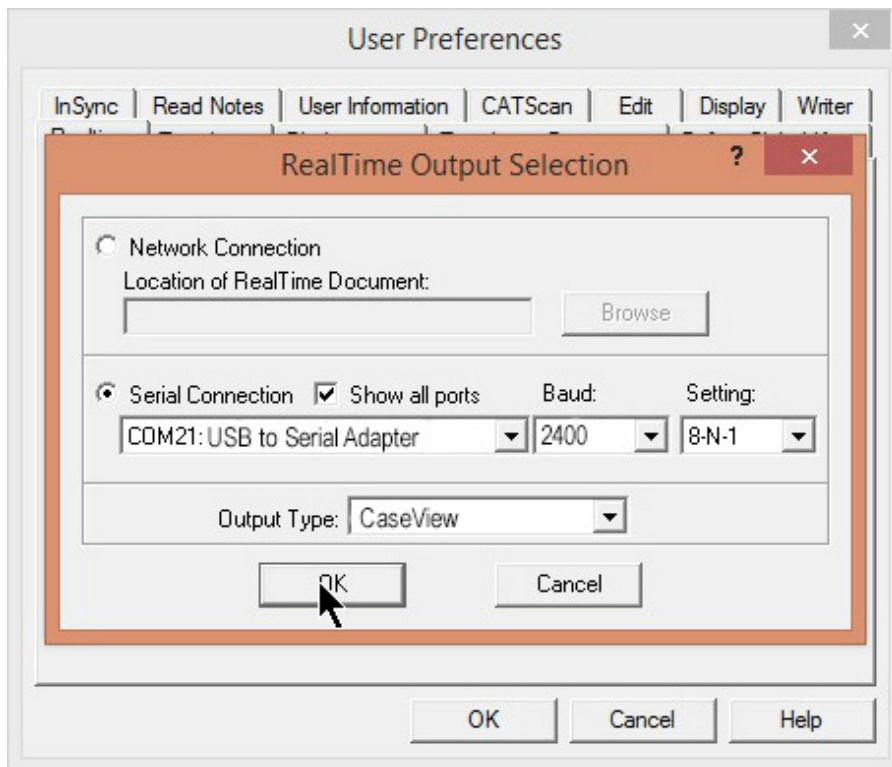
FIGURE 1:



Within StenoCat, go to “Tools,” then “User Preferences.”



Within User Preferences, click on “RealTime Output Selection.”



Click on “Serial Connection” and “Show all ports.”

Choose the COM port that your USB-to-Serial adapter is plugged into.

Choose a Baud rate of 2400.

Leave “Setting” as is.

“Output Type” should be “CaseView.”

Push “OK.”

Your computer should now be set to connect with the Judge’s computer.